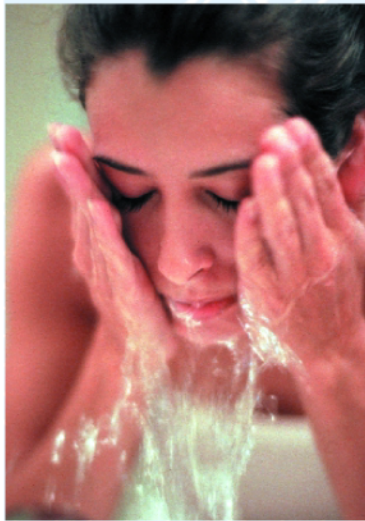




Culligan®

*Culligan
Soft-Minder® Twin
Water Softener
with the
9000 Series
Control*



Feel Good.
Live Better.





A Continuous Supply of Soft Water.

The Culligan Soft-Minder® Twin not only eliminates lime and hard water problems, it provides uninterrupted conditioned water, 24-hours-a-day. Two independent mineral tanks provide a continuous flow of soft water; when one tank is exhausted, the second tank takes over while the first regenerates. The Soft-Minder Twin is available in two different sizes to accommodate many soft water needs, including large families, extremely hard water problems or even light commercial use.

With the Culligan Soft-Minder Twin, you'll enjoy all the benefits of softer water—you'll use less detergent, but your clothes will be cleaner, your dishes will sparkle, and your skin will feel smoother.

A Culligan Soft-Minder® Twin Water Softener can:

- ✓ Cut water heating bills by up to 29%.
- ✓ Ease household cleaning by eliminating calcium deposits, lime, and even iron.
- ✓ Cut down on soap and detergent use.
- ✓ Help make your skin smooth and soft.
- ✓ Keep your clothes cleaner, brighter and longer.

The Culligan Soft-Minder® meter

A state-of-the-art turbine meter monitors daily water use and regenerates your conditioner only when necessary, saving salt and water.

Five-cycle motorized control valve

Made of non-corrosive material, this positive-action valve directs water flow during service and regeneration cycles.

Versatile timer

Automatically regulates all cycles of operation, including time and frequency of regeneration, backwashing, brine rinse and refill to meet your individual needs.

Longer-lasting plumbing pipes

Scale buildup can clog household plumbing pipes and water heater, resulting in pressure drops and costly repair charges. A Culligan Water Softener can reduce the amount of scale in your water supply and help keep your pipes free of residue.



Exclusive Tripl-Hull® mineral tank

This tank features a corrosion-resistant liner sealed within a rugged steel tank. The exterior of the steel tank is then protected by a molded plastic jacket to minimize condensation and corrosion to the outside surface. *The Tripl-Hull tank is backed by the Culligan Limited Lifetime Warranty.* The terms of product warranties vary and may be modified from time to time. Please refer to such warranty for applicable terms and conditions. Culligan will provide a copy of same upon request.

Cullex® resin

A long-lasting softening resin delivers stability and uniformity to assure maximum water conditioning capacity and flow.

Softener brine tank

Features a Dubl-Safe™ brine refill control, which provides for assured shut-off, and corrosion-proof components for long life.

Bypass valve

Allows you to manually bypass the system for uses not requiring softened water—such as watering the lawn.

Culligan: A Name You Can Trust, Service You Can Rely On.

Since 1936, Culligan has delivered better water through better service. We've worked hard to build the world's largest network of trained service technicians to back the industry's broadest line of water conditioners. And, we back those products with outstanding warranties and service. If you ever have questions or need assistance, your Culligan Man™ is a phone call away and ready to help.

“Hey Culligan Man!”

Culligan

www.culligan.com
1-800-CULLIGAN
©2000 Culligan International Company
DCO 992688
Printed in USA (09/00)
SL-0085
MOORE PART NO. 37138

Culligan Man, Hey Culligan Man, Soft-Minder, Tripl-Hull, Cullex, and Dubl-Safe are trademarks of Culligan International Company.