



## THE CULLIGAN<sup>®</sup> HI-FLO<sup>®</sup> 42 FILTERS



### *Your choice of Mixed-Media Depth or Granular Activated Carbon Filters*

#### *Mixed-media depth filters reduce suspended solids and organics*

The mixed media, made of specially selected grades of anthracites, sand and garnet materials, offers optimal performance. Coarse, light media stays on top and fine, heavy media remains at the bottom, so different sizes and gravities of filter media materials use the entire depth for retention of solids. The true depth filtration results in longer filter run lengths, higher filtration rates and outstanding water quality.

#### *Cullar<sup>®</sup> granular activated carbon filters dechlorinate and reduce dissolved organics*

A high-quality granular activated carbon both adsorbs and provides additional filtration. Carbon, manufactured from select grades of bituminous coal, results in a high-activity, durable product that stands up to the abrasion associated with repeated backwashing. Carefully controlled activation for an exceptionally high internal surface area with maximum pore size effectively adsorbs a broad range of high and low molecular weight organic compounds.

### CULLIGAN HI-FLO 42 WATER FILTERS FEATURES

- **One-Piece Valve Body** eliminates the need for extra seals and reduces the possibility of leaks.
- **Full-Flow Ports** ensure water flows easily to even the top floors or remote points of buildings. Hi-Flo 42 consistently delivers high flow and the lowest pressure loss possible.
- **Top-Mount Control Valve** keeps plumbing connections simple and adaptable. Convert flow easily from left-to-right or right-to-left, so the number of fittings needed are minimized and pressure loss reduced.
- **Electronic Controls** are fully programmable to allow reconditioning at any hour of the day, and at any interval from 1 to 42 days; easy adjustment of backwash and fast rinse times.
- **Three Types of Tanks:**
  - **Rugged Steel** - Phenolic epoxy-lined interior and durable gloss epoxy exterior ensures long life.
  - **Reinforced Plastic** - Fiberglass-reinforced is corrosion-proof for use in extremely humid environments
  - **ASME Steel** - Built and certified at the Culligan factory, rated 125 psi.
- **Seismic Zone-4 bolt-down legs** - The steel softener tank features bolt-down legs designed to comply with earthquake requirements (UBC Importance Factor 1.0).
- **Available options:**
  - Timeclock - Delayed
  - Pressure Switch - Immediate or Multiple units with sequence.

## Mixed Media Filters

Product Applications	Benefits
Drinking Water	Complies with EPA and WHO standards for turbidity.
Food & Beverage	Reduces turbidity and suspended solids; improves process water taste and clearness.
Boilers	Reduces turbidity to minimize sludge blowdown; reduces chemical and heated water waste.
Industrial Process	Reduces particulate matter that erodes nozzles, affects product quality and causes re-work.
Pretreatment	Lowers Silt Density Index (SDI) by reducing colloidal and organic material; protects costly membrane and resin .
Recirculation Systems	Reduces contaminants so water can be reused, resulting in savings on water and wastewater discharge bills.

## Cullar<sup>®</sup> Granular Activated Carbon Filters

Product Applications	Benefits
Drinking Water	Improves taste and reduces undesirable odors and colors by adsorbing dissolved organics.
Industrial	Effectively adsorbs a broad range of high and low molecular weight organic compounds and dechlorination.
Pretreatment	For reverse osmosis and other membrane processes
Ice and Beverage	Improves taste and reduces unwanted colors, tastes and odors.

## LIMITED WARRANTY

Culligan Hi-Flo 42 water filters are backed by a limited 1-year warranty against defects in material, workmanship and corrosion. In addition, tanks carry a limited 5-year warranty against internal corrosion.

## GENERAL SPECIFICATIONS

Flow	Varies from 10-140 gpm 38-530 L/min depending on application
Pressure	40-100 psi 276-690 kPa
Temperature	34-120° F 1-48° C
Electrical Requirements	120V/60 Hz/Single Phase
Tanks	20 to 42 inch diameter 51 cm to 107 cm
Pipe	2 inch inlet - outlet connection

## SAFETY NOTE

Water sources and water quality often vary considerably, even within a community. If you are concerned about the quality of your water supply, your Culligan dealer will gladly assist you in obtaining a water analysis from an independent certified laboratory. Or, your local municipal or private water utility or county health department may also provide water analysis. Your local independently operated Culligan dealer can recommend the necessary filtration equipment after a thorough review of the raw water characteristics.

These filtration products alone are not intended to make polluted or bacterially contaminated water supplies safe for human consumption.

**Culligan**  
is Water™

Commercial Systems  
©1999 Culligan  
1-800-CULLIGAN  
www.culligan.com  
Printed in USA Rev. 4/99  
SL-0010  
Moore Part No. 46903



# HI-FLO<sup>®</sup> 42

## DEPTH FILTERS FOR SEDIMENT REDUCTION

### SPECIFICATIONS AND OPERATING DATA

MODEL NUMBER		HD-20	HD-24	HD-30	HD-36	HD-42
<b>Peak</b>						
Service Flow @	gpm @ psi	30 @ 7	45 @ 8	75 @ 11	100 @ 17	140 @ 30
Pressure Drop	L/min @ kPa	114 @ 48	170 @ 55	284 @ 76	379 @ 117	530 @ 207
<b>Normal</b>						
Service Flow @	gpm @ psi	15 @ 2	20 @ 3	35 @ 4	50 @ 6	70 @ 7
Pressure Drop	L/Min @ kPa	57 @ 14	76 @ 21	132 @ 28	189 @ 41	265 @ 48
Backwash Flow	gpm	30	48	70	90	135
	L/min	114	182	265	341	511
<b>Tank Size</b>						
Steel	in	20 x 54	24 x 54	30 x 54	36 x 60	42 x 60
	cm	51 x 137	61 x 137	76 x 137	91 x 152	107 x 152
Fiberglass	in	21 x 69	24 x 72	30 x 72	36 x 72	NA
	cm	53 x 175	61 x 183	76 x 183	91 x 183	NA
<b>Pipe Size</b>						
Inlet/Outlet	in	2	2	2	2	2
Media Volume	ft <sup>3</sup>	6	8	12.0	17	24
	m <sup>3</sup>	0.17	0.227	0.340	0.48	0.68
<b>Ship Weight, Approx.</b>						
Steel	lb	867	1038	1550	2287	3618
	kg	394	471	704	1038	1643
Fiberglass	lb	720	910	1335	2010	NA
	kg	327	413	606	913	NA

**NOTES:**

- 1 Service flow rates are based on 7 gpm/ft<sup>2</sup> (26 L/m<sup>2</sup>/min) for Normal and 15 gpm/ft<sup>2</sup> (57 L/m<sup>2</sup>/min) for Peak Flow rates. Actual service rate may vary from 2 to 20 gpm/ft<sup>2</sup> (8 - 76 L/m<sup>2</sup>/min) depending upon the application and the raw water.
- 2 Backwash flow rates are based on 12 - 14 gpm/ft<sup>2</sup> (45 - 53 L/m<sup>2</sup>/min) using 50° F (10° C) water. A different backwash rate may be required depending upon water temperature or other water conditions.
- 3 Operational, maintenance and replacement requirements are essential for this product to perform as advertised. Service is available through independently operated Culligan dealerships.

*Culligan*

Commercial Systems  
©2000 Culligan  
1-800-CULLIGAN  
www.culligan.com  
Printed in USA Rev. 4/00  
DCO 992587  
SL-0011  
Moore Part No. 46904



# HI-FLO<sup>®</sup> 42

## CULLAR<sup>®</sup> AUTOMATIC FILTERS

### FOR DECHLORINATION AND ORGANIC ADSORPTION

#### SPECIFICATIONS AND OPERATING DATA

MODEL NUMBER		HR-20	HR-24	HR-30	HR-36	HR-42
<b>Dechlorination</b>						
Service Flow @	gpm @ psi	20 @ 3	30 @ 4	50 @ 6	70 @ 9	90 @ 11
Pressure Drop	L/min @ kPa	76 @ 21	114 @ 28	189 @ 41	265 @ 62	341 @ 76
<b>Organics Adsorption</b>						
Service Flow @	gpm @ psi	10 @ 1	15 @ 2	25 @ 3	35 @ 3	45 @ 4
Pressure Drop	L/Min @ kPa	38 @ 7	57 @ 14	95 @ 21	132 @ 21	170 @ 28
Backwash Flow	gpm	20	30	48	70	90
	L/min	76	114	182	265	341
<b>Tank Size</b>						
Steel	in	20 x 54	24 x 54	30 x 54	36 x 60	42 x 60
	cm	51 x 137	61 x 137	76 x 137	91 x 152	107 x 152
Fiberglass	in	21 x 69	24 x 72	30 x 72	36 x 72	NA
	cm	53 x 175	61 x 183	76 x 183	91 x 183	NA
<b>Pipe Size</b>						
Inlet/Outlet	in	2	2	2	2	2
Media Volume	ft <sup>3</sup>	6	8	12	18	24
	m <sup>3</sup>	0.170	0.226	0.340	0.509	0.679
<b>Ship Weight, Approx.</b>						
Steel	lb	609	679	1036	1492	2239
	kg	276	308	470	677	1017
Fiberglass	lb	470	555	820	1135	NA
	kg	213	252	372	575	NA

**NOTES:**

- 1 Service flow rates are based on 5 gpm/ft<sup>2</sup> (19 L/m<sup>2</sup>/min) for Organics Adsorption and 10 gpm/ft<sup>2</sup> (38 L/m<sup>2</sup>/min) for Dechlorination. Actual service rate may vary depending upon the application and the raw water.
- 2 Backwash flow rates are based on 10 gpm/ft<sup>2</sup> (38 L/m<sup>2</sup>/min) using 50° F (10° C) water. A different backwash rate may be required depending upon water temperature or the type of carbon used.
- 3 Operational, maintenance and replacement requirements are essential for this product to perform as advertised. Service is available through independently operated Culligan dealerships.

*Culligan*

Commercial Systems  
 ©2000 Culligan  
 1-800-CULLIGAN  
 www.culligan.com  
 Printed in USA Rev. 4/00  
 DCO 992587  
 SL-0011  
 Moore Part No. 46904





LIMITED

# WARRANTY

## HI-FLO® 52 / 42 WATER SOFTENERS

You have just purchased one of the finest water conditioners made. As an expression of our confidence in Culligan products, your water conditioner is warranted to the original end-user, when installed in accordance with Culligan International Company specifications, against defects in material and workmanship from the date of original installation, as follows:

<b>For a period of ONE YEAR</b>	<b>The entire conditioner</b>
<b>For a period of TWO YEARS</b>	<b>The control valve internal parts</b>
<b>For a period of FIVE YEARS</b>	<b>The control valve body, but excluding its internal parts</b>
<b>For a period of FIVE YEARS</b>	<b>The fiberglass wound conditioner tank(s), if so equipped*</b>
<b>For a period of FIVE YEARS</b>	<b>The epoxy-lined steel conditioner tank(s), if so equipped</b>

\*The tank must be protected by a vacuum breaker device as described in the unit's operating manual. Damage to the tank caused by vacuum is not covered by this warranty. The unit must be used in operating conditions that conform to Culligan's recommended design guidelines.

If a part described above becomes defective, within the specified period, you should notify your independently operated Culligan dealer and arrange a time during normal business hours for the dealer to inspect the water conditioner on your premises. Any part found defective within the terms of this warranty will be repaired or replaced by the dealer. You pay only freight from our factory and local dealer charges.

Of course, damage caused by accident, fire, flood, freezing, Act of God, misuse, misapplication, neglect, alteration, installation or operation contrary to our printed instructions, or by the use of accessories or components which do not meet Culligan specifications, is not covered by this warranty.

Our product performance specifications are furnished with each water conditioning unit. TO THE EXTENT PERMITTED BY LAW, CULLIGAN DISCLAIMS ALL IMPLIED WARRANTIES INCLUDING, WITHOUT LIMITATION, WARRANTIES OF MERCHANTABILITY AND FITNESS FOR PARTICULAR PURPOSE; TO THE EXTENT REQUIRED BY LAW, ANY SUCH IMPLIED WARRANTIES ARE LIMITED IN DURATION TO THE ONE-YEAR PERIOD SPECIFIED ABOVE FOR THE PARTS DESCRIBED IN THIS LIMITED WARRANTY. As manufacturer, we do not know the characteristics of your water supply or the purpose for which you are purchasing a water conditioner. Please understand that the quality of water supplies may vary seasonally or over a period of time, and that your water usage rate may vary as well. Water characteristics can also change considerably if your water conditioner is moved to a new location. For these reasons, we assume no liability for the determination of the proper equipment necessary to meet your requirements, and we do not authorize others to assume such obligations for us. Further, we assume no liability and extend no warranties, express or implied, for the use of this product on a non-potable water source. OUR OBLIGATIONS UNDER THIS WARRANTY ARE LIMITED TO THE REPAIR OR REPLACEMENT OF THE FAILED PARTS OF THE WATER CONDITIONER, AND WE ASSUME NO LIABILITY WHATSOEVER FOR DIRECT, INCIDENTAL, CONSEQUENTIAL, SPECIAL, GENERAL, OR OTHER DAMAGES, WHETHER FROM CORROSION OR OTHER CAUSES.

### CONSUMERS:

Some states do not allow limitations on how long an implied warranty lasts, so the above limitation may not apply to you. Similarly, some states do not allow the exclusion of incidental or consequential damages, so the above limitation or exclusion may not apply to you. This warranty gives you specific legal rights, and you may also have other rights which vary from state to state. Consult your telephone directory for your local independently-operated Culligan dealer, or write Culligan International Company, for warranty and service information.

**CULLIGAN INTERNATIONAL COMPANY**  
**One Culligan Parkway**  
**Northbrook, Illinois 60062**

# Culligan® WRITTEN SPECIFICATION

<b>HI-FLO® 42 AUTOMATIC WATER FILTER</b>	<b>CUSTOMER:</b>
	<b>PROPOSAL DATE:</b>

The equipment described is being offered by \_\_\_\_\_, an independently operated franchisee of Culligan International Company

**PURPOSE**

The purpose of the Culligan® Model \_\_\_\_\_ (duplex) pressure filter system specified will be to reduce (check one)

- suspended solids down to 10 microns in size
- turbidity down to \_\_\_\_\_ NTU
- free chlorine
- chloramines
- tastes, odors and colors
- detergents

at a flow rate of \_\_\_\_\_ gpm with a pressure drop of \_\_\_\_\_ psi.

**RESIN TANK (check one)**

- Steel, non-code construction

Each resin tank will be \_\_\_\_\_ (inches) (cm) in diameter. The sideshell height will be \_\_\_\_\_ (inches) (cm), sufficient to allow adequate freeboard space during backwashing. The tank will be designed for 100 psi construction.

The tank will be supported by steel legs that permit skid mounting and comply with seismic loading requirements for Zone 4, UBC Importance Factor 1.0.

The tank will be internally lined with a phenolic epoxy to a 8-10 mil thickness. The exterior will be sand blasted, painted with a rust-inhibiting primer, and then finished with a gloss epoxy top coat.

The tank will be equipped with an opening in the top head for mineral filling and periodic inspection, and another opening in the lower sideshell for mineral replacement.

- Steel, 125 psi ASME code construction

Each tank will be \_\_\_\_\_ (inches) (cm) in diameter. The sideshell height will be \_\_\_\_\_ (inches) (cm), sufficient to allow adequate freeboard space backwashing. The tank will be built and stamped to 125 psi ASME code construction.

The tank will be supported by steel legs that permit skid mounting and comply with seismic loading requirements for Zone 4, UBC Importance Factor 1.0.

The tank will be internally lined with a phenolic epoxy to a 8-10 mil thickness. The exterior will be sand blasted, painted with a rust-inhibiting primer, and then finished with a gloss epoxy top coat.

The tank will be equipped with an opening in the top head for mineral filling and periodic inspection, and another opening in the lower sideshell for mineral replacement.

- Fiberglass Reinforced Plastic

Each tank will be \_\_\_\_\_ (inches) (cm) in diameter. The overall height will be \_\_\_\_\_ (inches) (cm), sufficient to allow adequate freeboard space during backwashing.

Each tank will be manufactured of polyester reinforced by a continuous roving glass filament overwrap. The top opening will be T4"-8" UN threaded and the tank bottom will be supported on a molded structural base.

**DISTRIBUTOR SYSTEM**

The tank will have a upper baffle distributor which will disperse water laterally to avoid channeling within the media bed.

20 inch tanks will have a lower distributor consisting of a plastic riser pipe with a fine-slotted strainer attached to the bottom of the pipe. Proper underbedding media will be provided to aid in the even collection of water and make efficient use of the filtering capacity of the media.

For 24 inch tank and above, the lower distributor will consist of a plastic riser pipe with a hub radial assembly attached to the bottom of the pipe. It will incorporate fine slot distributions to avoid possible passing of media to service in the event of a plumbing system upset. No slots will face upward to minimize the opportunity of channeling. Proper underbedding media will be provided to aid in the even collection of water and make efficient use of the filtering capacity of the media.

## **FILTER MEDIA**

(Depth Filter - suspended solids/turbidity reduction)

Each filter tank will have a three layer media bed which is designed to operate as a depth filter rather than a surface filter. The top layer will collect coarse turbidity. The middle layer will accumulate particles normally trapped by sand filters. The bottom layer of high density fine material will polish the water by removing particles down to 10 microns in size. Mineral density, particle size, uniformity co-efficient, and depth of each layer will be carefully controlled to assure proper stratification after backwash, and optimum performance in service.

(Activated Carbon Filter - Chlorine/Organic reduction)

The media will be a 12 x 40 mesh activated carbon selected for general purpose use to handle a broad range of adsorption applications. The carbon filtration media will be of a high quality, possessing characteristics of durability, long life and resistance to attrition. It will not impart taste, odor or color to the water being filtered. Sufficient activated carbon will be furnished to provide a bed depth approximately 30 inches.

## **TANK CONFIGURATION (check one)**

Single. All water will flow through one tank.

Duplex Parallel. Water will flow through two tanks simultaneously, except when one filter is reconditioning. The system will be designed to prevent simultaneous regeneration.

## **AUTOMATIC CONTROL**

The automatic control will be of top-mount design, one-piece construction. It will have provision for either left-to-right or right-to-left plumbing flow to simplify installation while maintaining a forward-facing timer for easy servicing. The control valve will have 2 inch NPTI inlet and outlet connections. The control will provide water to service through two smooth-port diaphragm valves.

The control valve will incorporate self-adjusting flow regulators to control the rate of flow and prevent media loss during backwash, regardless of pressure fluctuations between (40 and 100 psi) (276 and 690 kPa). The control will open and close slowly to prevent noise and hydraulic shock. The electrical control mechanism will be constructed to NEMA 3 enclosure standards. Inlet and outlet pressure gauges will be supplied to visually observe pressure drop across the filter.

Regeneration frequency will be controlled by a fully programmable solid state electronic controller which permits reconditioning at any time of day or night, and at any interval from 1 to 42 days. The controller will permit adjustment of backwash time and fast rinse time. A recondition button will be provided to permit manual recondition at any time.

(optional) A Pressure Differential Switch will be provided so that the backwash of the filter can be initiated when the headloss reaches a preset limit.

## **CHEMICAL FEED (optional)**

\_\_\_\_\_ chemical proportioning pumps will be provided. They will be used for the feeding of \_\_\_\_\_. Pumping capacity will be 1.0 gph per unit. The pumps will be of the positive displacement diaphragm design capable of operating at 100 psi working pressure. Each will be powered by an electronically-controlled solenoid with a power consumption averaging 22 watts per hour when operated at full load conditions. Adjustment of the chemical feed rate will be by two knobs; one for adjustment of stroke length, and the other for adjustment of stroke frequency. The pump will also include the Four Function Valve.

The chemical pump housing will be of chemically resistant glass fiber reinforced thermoplastic with a fiber reinforced polypropylene solenoid carrier. All exposed fasteners will be stainless steel. Wetted parts will be selected for resistance to the material being pumped. This includes PVC head, Teflon\* faced diaphragm and seal rings, and ceramic ball checks.

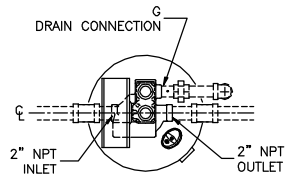
Each feeder system will include a molded polyethylene solution container with a capacity of \_\_\_\_\_ gallons. The solution tank system will include a cover, strainer, and suction valve. A propeller-type agitator will be included for \_\_\_\_\_ of the solution tank systems.

## **INSTRUCTIONS**

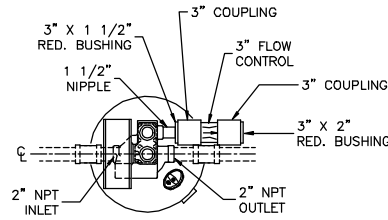
A complete set of instructions covering the installation and operation of the filter shall be provided in booklet form. All component parts shall be easily identified, in exploded views, by individual part numbers.

## **PRODUCT INTEGRITY**

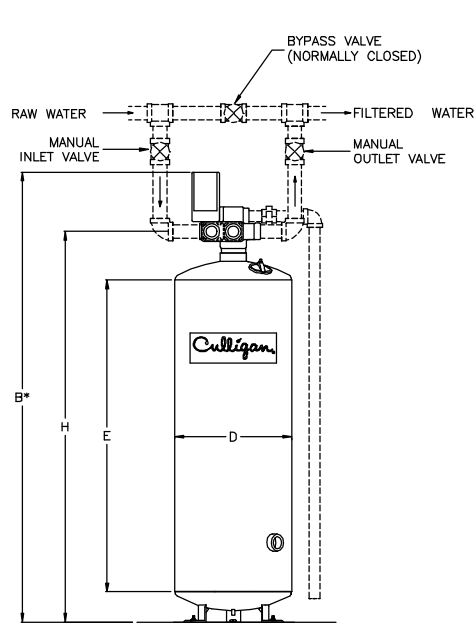
The Culligan System referred to above carries a written limited warranty on workmanship and materials. Refer to the warranty itself for all information on warranty rights relating to this system. Independently operated Culligan dealerships throughout the world have replacement parts and factory authorized service available. Currently there is a dealership within \_\_\_\_\_ miles of the jobsite so that the equipment can be maintained and properly serviced as needed.



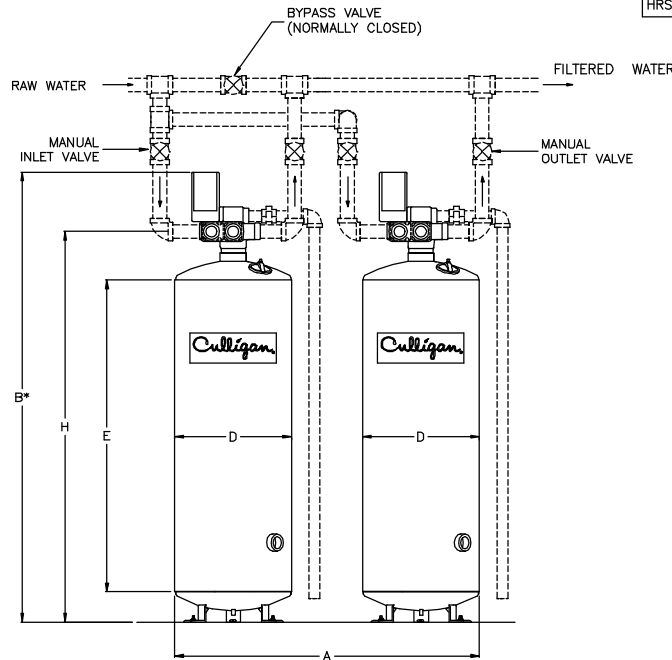
TOP VIEW



TOP VIEW  
FOR HDS-42  
DRAIN CONNECTION



SIMPLEX INSTALLATION



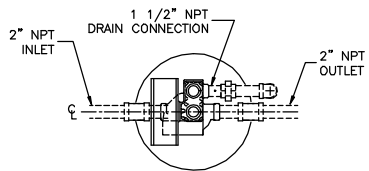
DUPLEX INSTALLATION

MODEL	DIMENSIONS (INCHES)						MIN. DRAIN PIPE SIZE	DRAIN FLOW	SIMPLEX OPER. WT.
	A	B*	D	E	G	H			
HDS-20-T	52	74	20	54	1 1/2"	62	1 1/2	30gpm	1,200 lb.
HDS-24-T	60	75	24	54	1 1/2"	63	1 1/2	48gpm	1,630 lb.
HDS-30-T	72	76	30	54	1 1/2"	64	2	70gpm	2,560 lb.
HDS-36-T	84	86	36	60	1 1/2"	74	2	90gpm	3,900 lb.
HDS-42-T	96	98	42	60	2"	86	2 1/2	135gpm	5,450 lb.
HRS-20-T	52	74	20	54	1 1/2"	62	1 1/2	20gpm	900 lb.
HRS-24-T	60	75	24	54	1 1/2"	63	1 1/2	30gpm	1,180 lb.
HRS-30-T	72	76	30	54	1 1/2"	64	1 1/2	48gpm	1,870 lb.
HRS-36-T	84	86	36	60	1 1/2"	74	2	70gpm	2,870 lb.
HRS-42-T	96	98	42	60	1 1/2"	86	2	90gpm	4,030 lb.

NOTES:

- (1) PIPE AND FITTINGS SHOWN DASHED TO BE FURNISHED BY OTHERS.
  - (2) AN ELECTRICAL OUTLET SHOULD BE PROVIDED WITHIN 5 FEET OF THE EQUIPMENT.
  - (3) ALL DIMENSIONS ARE ±1 INCH AND SUBJECT TO CHANGE TO CHANGE WITHOUT NOTICE.
  - (4) PIPE AND FITTINGS SHOWN DASHED TO BE FURNISHED BY OTHERS.
  - (5) UNIONS SHOULD BE LOCATED ON INLET, OUTLET, AND DRAIN CONNECTIONS OF CONTROL VALVE TO FACILITATE SERVICING
  - (6) THE USE OF DISSIMILAR METALS IN A PIPING SYSTEM IS NOT RECOMMENDED. WHERE DISSIMILAR METALS MUST BE CONNECTED IN A WATER SYSTEM, THE USE OF NONCONDUCTIVE (DIELECTRIC) FITTINGS WILL REDUCE GALVANIC CORROSION.
- \* OVERALL HEIGHT BASE ON STANDARD NON-CODE CONSTRUCTION. SPECIALLY CONSTRUCTED TANKS DESIGNED FOR HIGHER WORKING PRESSURES AND A.S.M.E. CODE CONSTRUCTED TANKS ARE SLIGHTLY TALLER. CONSULT FACTORY IF HEIGHT IS CRITICAL.
- ALLOW 24 INCHES ABOVE FILTER FOR FILLING. TANKS BUILT TO 125 PSI ASME CODE ARE TALLER. ADD THE FOLLOWING TO DIMENSIONS B AND H:  
 MODEL 180-3 INCHES    MODEL 600-13 INCHES  
 MODEL 300-3 INCHES    MODEL 750-7 INCHES  
 MODEL 450-7 INCHES    MODEL 900-3 INCHES
- \* DO NOT MAKE A DIRECT CONNECTION TO THE DRAIN. PROVIDE AN AIR GAP OF AT LEAST FOUR TIMES THE DIAMETER OF THE DRAIN PIPE TO CONFORM TO SANITATION CODES AND TO PERMIT THE OBSERVATION OF THE DRAIN FLOW. DO NOT INSTALL A VALVE IN DRAIN LINE OR USE PIPE SMALLER THAN LISTED IN TABLE.

				<b>Culligan®</b>			
				NORTHBROOK, ILLINOIS			
SCALE		DETAILED BY		CHECKED BY		APPROVED	
00.00		KMR					
REF. NO.		DATE		DATE		DATE	
		3/11/99					
LET	CHANGE	BY	APP	DATE	NAME		
					HI-FLO @ 42 (STEEL TANK)		
PRINT & BILL OF MATERIALS ARE NOT TO BE USED WITHOUT THE WRITTEN CONSENT OF CULLIGAN USA					DEPTH, CULLAR, 20"-42" FILTER		
DO NOT SCALE FROM DRAWING					PART NO. F42_S		
					TECHNICAL DATA SHEET		
					SHEET 1 OF 1		

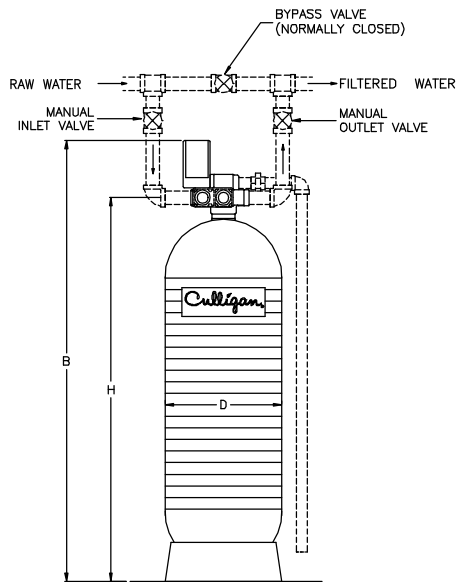


TOP VIEW

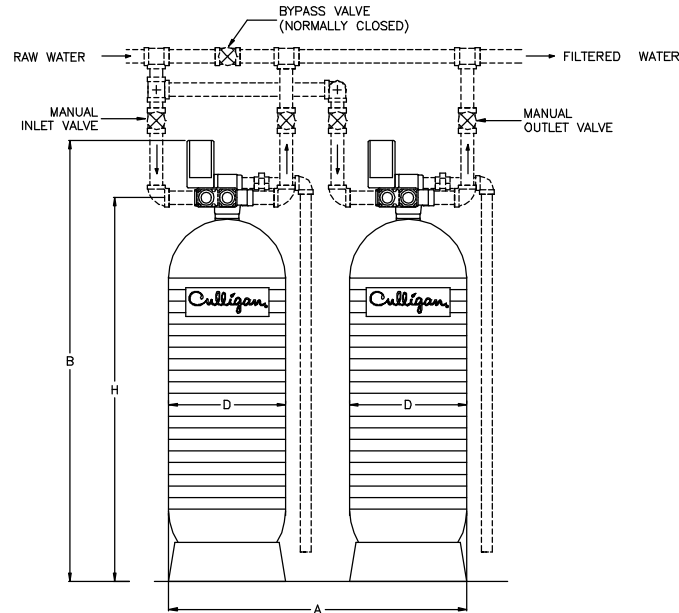
NOTES:

- (1) ALLOW 24 INCHES ABOVE FILTER FOR FILLING.
  - (2) SYSTEM USES FRP TANKS WHICH MUST NOT BE SUBJECTED TO VACUUM. INSTALL SIPHON BREAK ON DRAIN LINE. INSTALL VACUUM BREAKER ON INLET PIPING IF THE SERVICE LINE IS SUBJECT TO A VACUUM.
  - (3) PIPE AND FITTINGS SHOWN DASHED TO BE FURNISHED BY OTHERS.
  - (4) AN ELECTRICAL OUTLET SHOULD BE PROVIDED WITHIN 5 FEET OF THE EQUIPMENT.
  - (5) UNIONS SHOULD BE LOCATED ON INLET, OUTLET, AND DRAIN CONNECTIONS OF CONTROL VALVE TO FACILITATE SERVICING
  - (6) ALL DIMENSIONS ARE ±1 INCH AND SUBJECT TO CHANGE TO CHANGE WITHOUT NOTICE.
- \* DO NOT MAKE A DIRECT CONNECTION TO THE DRAIN. PROVIDE AN AIR GAP OF AT LEAST FOUR TIMES THE DIAMETER OF THE DRAIN PIPE TO CONFORM TO SANITATION CODES AND TO PERMIT THE OBSERVATION OF THE DRAIN FLOW. DO NOT INSTALL A VALVE IN DRAIN LINE OR USE PIPE SMALLER THAN LISTED IN TABLE.

MODEL	DIMENSIONS (INCHES)					DRAIN FLOW	SIMPLEX OPER. WT.
	A	B	D	H	MIN. DRAIN PIPE SIZE		
HDF-20-T	46	86	21	74	1 1/2	30gpm	857 lb.
HDF-24-T	54	88	24	76	1 1/2	48gpm	1,297 lb.
HDF-30-T	66	96	30	84	2	70gpm	2,043 lb.
HDF-36-T	78	96	36	84	2	90gpm	2,957 lb.
HRF-20-T	46	86	21	74	1 1/2	20gpm	562 lb.
HRF-24-T	54	88	24	76	1 1/2	30gpm	931 lb.
HRF-30-T	66	96	30	84	1 1/2	48gpm	1,489 lb.
HRF-36-T	78	96	36	84	2	70gpm	2,108 lb.



SIMPLEX INSTALLATION



DUPLEX INSTALLATION

				<b>Culligan®</b> NORTHBROOK, ILLINOIS			
SCALE		DETAILED BY		CHECKED BY		APPROVED	
00.00		KMR					
REF. NO.	DATE	DATE	DATE	DATE	DATE	DATE	DATE
		3/10/99					
PRINT & BILL OF MATERIALS ARE NOT TO BE USED WITHOUT THE WRITTEN CONSENT OF CULLIGAN USA DO NOT SCALE FROM DRAWING				NAME HI-FLO® 42 (FIBERGLASS) DEPTH, CULLAR, 20"-36" FILTER TECHNICAL DATA SHEET		PART NO. F42_F SHEET 1 OF 1	